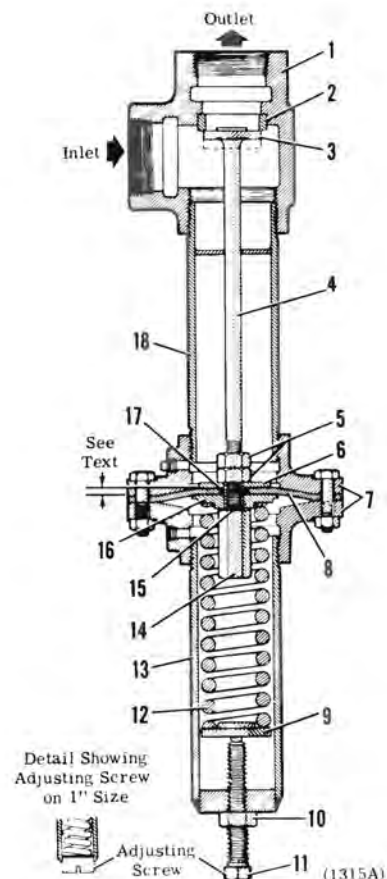




BACK PRESSURE REGULATOR

- | | | |
|-------------------|---------------------|----------------------|
| 1. Body | 7. Flange | 13. Spring Housing |
| 2. Seat | 8. Diaphragm | 14. Stem Nut |
| 3. Disc and Stem | 9. Spring Washer | 15. Gasket |
| 4. Disc and Stem | 10. Locknut | 16. Diaphragm Washer |
| 5. Locknuts | 11. Adjusting Screw | 17. Diaphragm Spacer |
| 6. Back-up Washer | 12. Spring | 18. Standpipe |



The Clayton Back Pressure Regulator is designed to:

- Provide stable operation of any steam generator where steam loads fluctuate rapidly or periods of sudden overload occur.
- Provide stable operation on start-up and during operation of multiple steam generator installations. Enables the steam generating equipment to remain in balance, thus reaching operating pressure more rapidly.
- Provide high pressure steam more

rapidly when used on heavy oil burning units equipped with steam/electric fuel oil heaters, thus reducing the cost of electrical pre-heat.

By controlling the minimum pressure of the steam generator the Back Pressure Regulator prevents "flashing" of the liquid in the steam generator, thus maintaining it in a stable condition at all times. This results in a faster heat up of the steam system after initial start and faster recovery after an overload period. The pressure differential held by the regulator will not retard heat delivery to the system.

- The Clayton Back Pressure Regulator is available in three sizes for the following steam capacities and pressure ranges;*

Size	Lbs/Hr	Working Pressure	Max. Inlet Pressure
1 in.	1140	60-200 psig	200
2 in.	3500	60-250 psig	250
3 in.	8625	60-250 psig	250

High Pressure

3 in.	9000	250-350 psig	350
-------	------	--------------	-----

*Regulators (selected by Clayton) for higher pressures and larger units are also available.

SPECIFICATIONS

INSTALLATION

On multiple installations, a separate regulator is required on each steam generator. The regulator must be installed vertically (as shown) with the steam outlet at the top.

ADJUSTMENT

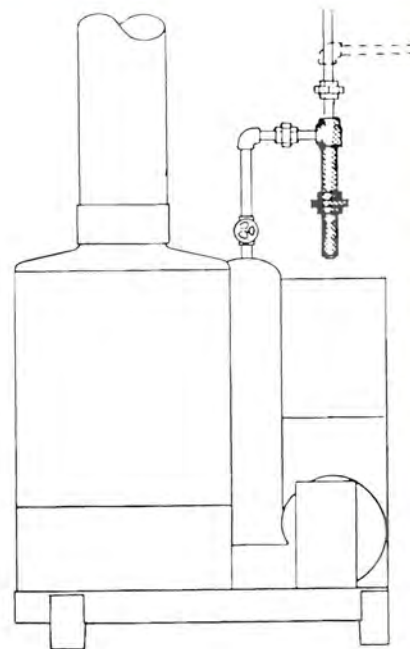
After installation, the regulator is adjusted in the following manner: From an initial start on a cold system, operate the steam generator at full fire. While the plant system pressure is still zero or low, immediately adjust the spring on the regulator to give the proper separator pressure as required for maximum adjusted working pressure. These pressures are:

Steam System Maximum Working Pressure

350 psig
300 psig
200 psig
150 psig
100 psig

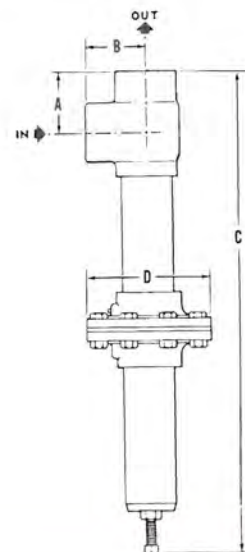
Adjust Back Pressure Regulator to Retain Separator Pressure

290 psig
240 psig
160 psig
110 psig
70 psig



For immediate working pressures, adjust the regulator to approximately 80% of the maximum working pressure. Example: For a maximum adjusted working pressure of 190 psi, the regulator should be adjusted to a separator pressure of 150 psi. These settings will result in a minimum pressure drop across the regulator of approximately 5 psi at full working pressure.

Size	Part No.	Dimensions			
		A	B	C	D
1"	UH-21836	2-1/8	2-1/8	17-1/2	3-3/4
2"	UH-22868	3-11/16	3-3/8	27-1/2	7
3"	UH-22413	4-3/8	4-3/8	38	8-1/2
3" (HP)	UH-25634	4-3/8	4-3/8	38	8-1/2



H.P. = High Pressure

Clayton
INDUSTRIES

REV. 4/4/16

4213 N. Temple City Blvd., P.O. Box 5530, El Monte, CA 91734-1530 • (818) 443-9381 • Telex 674404 or 188130 • Cable: Clayton El Monte

FACTORY-DIRECT SALES AND SERVICE

U.S. Offices

DETROIT • CINCINNATI • ATLANTA • BUFFALO • CHICAGO • CLEVELAND • DALLAS • NEW ENGLAND • NEW JERSEY • NORTHERN CALIFORNIA • PHILADELPHIA • PITTSBURGH • PORTLAND • SEATTLE

Worldwide Offices

CANADA • Clayton Sales and Service Ltd. — 6805 Invader Crescent, #12 Mississauga, Ontario L5T 2K6 (416) 564-3301

BELGIUM • Clayton of Belgium, N.V. — Rijksweg, 30, B-2680 Bornem, Belgium

FRANCE • Clayton de France S.A.R.L. — 2 Rue du Ventoux, 21 Petite Montagne, C.E. No. 1433, 91019 EVRY CEDEX, France

GERMANY • Clayton of Deutschland G.m.b.H. — Untergrath 190, 4150 Krefeld, Germany

MEXICO • Clayton de Mexico, S.A. — Nueva Industrial Vallejo, Mexico DF CP 07700

— Sucursal Monterrey, Carbajal y de la Cueva Norte, 338, Monterrey, N.L. 64000, Mexico

— Cucursal Guadalajara, Lopez Mateos Sur 500, Guadalajara, Jalisco, 45040, Mexico

NETHERLANDS • Clayton Nederland B.V. — Celciusstraat, 5, 3316 AC Dordrecht, Netherlands

SCANDINAVIA • Clayton Scandinavia A/S — P.O. Box 393, Enggaten 34, 2301 Hamar, Norway

— Ostra Hamngatan 17, 411 10 Goteborg, Sweden

UNITED KINGDOM • Clayton Thermal Products, Ltd. — 3 Tatton Court, Kingsland Grange, Woolston, Warrington Cheshire WA1 4RW, England

LICENSEES, AFFILIATES, SALES and SERVICE DISTRIBUTORS WORLD-WIDE

The descriptions and specifications shown were in effect at the time this publication was approved for printing. Clayton Industries, whose policy is one of continuous improvement, reserves the right to discontinue models at any time, or change specifications or design without notice and without incurring obligation