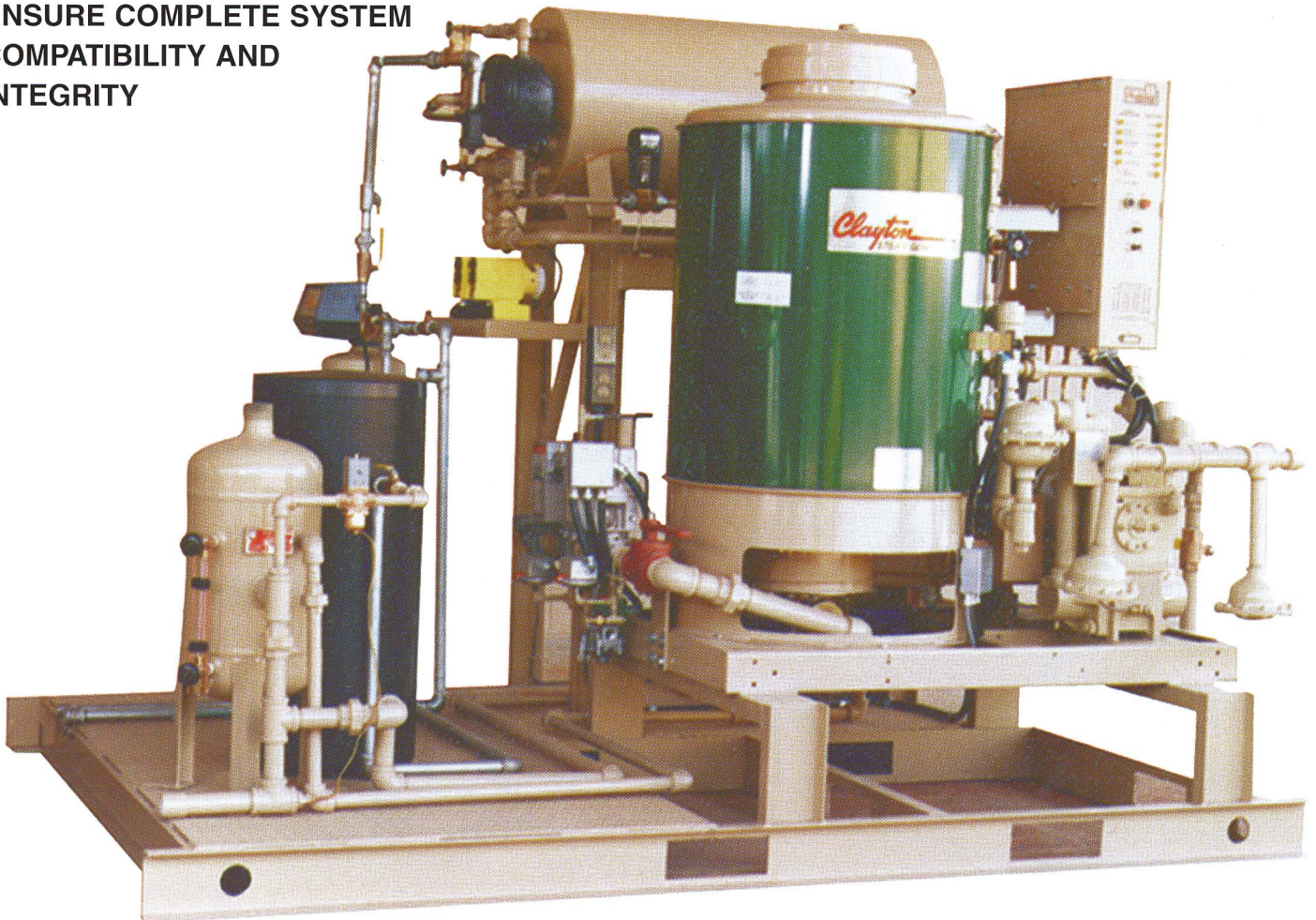


# ***SKID-MOUNTED STEAM SYSTEMS***

## ***THE CUSTOM PACKAGE***

Skid-mounted steam generating systems from Clayton Industries, which are available in a variety of standard and custom designed configurations, provide compact and convenient packages that are fully wired, assembled and piped at the factory. Clayton Steam Generators and skid-mounted packages:

- **REDUCE INSTALLATION TIME AND COSTS**
- **ENSURE COMPLETE SYSTEM COMPATIBILITY AND INTEGRITY**



60 BHP Generator Skid with a Hotwell  
(Atmospheric Feedwater Receiver) System



## Clayton Steam Systems:

- **SAVE FUEL**

The unique counter flow design provides higher fuel-to-steam efficiency than traditional boilers.

- **ARE SAFE FOR PERSONNEL & EQUIPMENT**

The Clayton design eliminates hazardous steam explosions.

- **PROVIDE RAPID RESPONSE**

The Clayton design responds rapidly to sudden or fluctuating load demands.

- **PROVIDE FAST START**

The Clayton design will provide full output from cold start within ten minutes, without thermal stress.

- **ARE COMPACT AND LIGHTWEIGHT**

The Clayton design typically occupies one-third of the floor space and is 75% lighter than a traditional boiler.

- **ENSURE HIGH QUALITY STEAM**

Clayton provides either a 99.5% or a 98% quality integral steam separator to minimize moisture and carryover.

- **AFFORD FUEL VERSATILITY**

Natural gas, propane, light oil and heavy oil burners available or in combination.

- **HAVE ADVANCED CONTROLS**

Most units are equipped with Programmable Logic Controllers (PLC) for accurate and reliable operation.

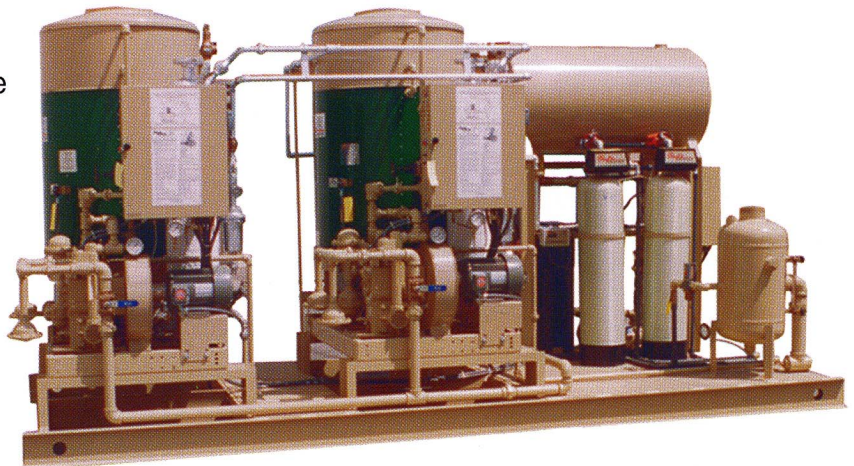
- **ARE AVAILABLE WITH LOW NOx**

Industry leading Low NOx burners available for added environmental protection.

- **ARE BACKED BY** fast, expert factory direct service that is available 24 hours per day throughout the U.S., Canada, Mexico and Europe and service distributors worldwide.



100 BHP Generator Skid  
with a Semi-Closed Receiver System



Generator Skid with two 100 BHP Steam Generators  
with a Hotwell (Atmospheric Feedwater Receiver)

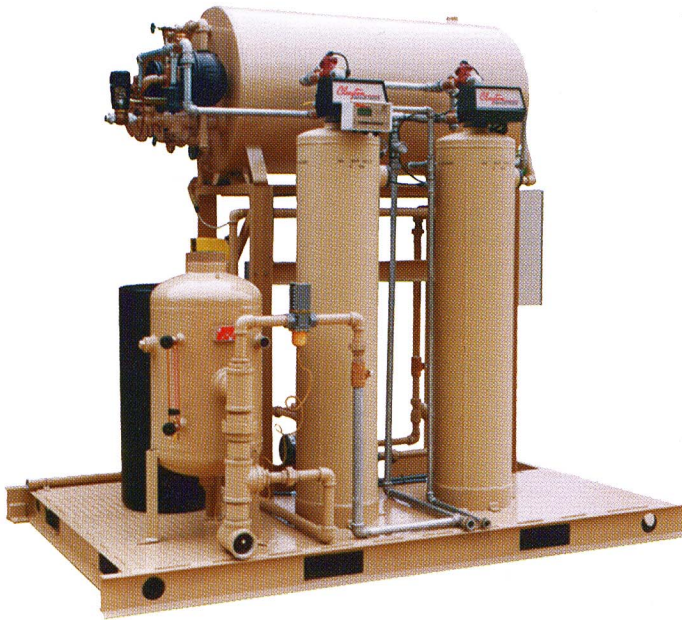


## Package Configurations:

- **WATER TREATMENT SKID** - mounting, piping and wiring on a common skid of the feedwater receiver, water softeners, chemical feed system, blowdown equipment and booster pump(s).
- **STEAM GENERATOR SKID** - mounting, piping and wiring of the Steam Generator along with all the water treatment skid components.
- **CONDENSATE RECEIVER SKID** - mounting of the condensate receiver.
- **CUSTOM SKID** - mounting of components as required for special projects.

If booster pumps are provided, skids include control panels with necessary motor starters and protection.

Whichever option you select, a Clayton skid package will save installation time and reduce field installation costs.



150 BHP Water Treatment Skid  
with a Hotwell (Atmospheric Feedwater Receiver)



700 BHP Water Treatment Skid  
with Semi-Closed Receiver System



1000 BHP Condensate Receiver Skid with Deaerator





Generator Skid with two 100 BHP Steam Generators  
with a Hotwell (Atmospheric Feedwater Receiver)

Clayton designs, manufactures, sells and services a full range of steam generators from 20 to 750 Boiler Horsepower (BHP). Larger steam requirements are met with multiple units. Most units can be equipped with a Super Economizer to raise thermal efficiency and Low NOx burner systems to comply with local standards. Larger models are equipped with Clayton's Compusteam PLC control for improved pressure control, reliability and maintainability.

**Clayton**  
**INDUSTRIES**  
**1-800-423-4585**

4213 Temple City Blvd., P.O. Box 5530, El Monte CA 91734 • Fax (626)442-1701

www.claytonindustries.com • E-mail address: clayemail@aol.com

FACTORY DIRECT SALES AND SERVICE

U.S. Offices

ATLANTA • BRAMPTON, ONTARIO • CHICAGO • CINCINNATI • CLAYTON, CA • CLEVELAND • DALLAS • DETROIT • DOVER, DE  
EL MONTE, CA • KANSAS CITY • LONG ISLAND, NY • NEW JERSEY • OLD GREENWICH, CT

AFFILIATES, LICENSEES, SALES and SERVICE DISTRIBUTORS WORLD-WIDE

THE DESCRIPTION AND SPECIFICATIONS SHOWN WERE IN EFFECT AT THE TIME THIS PUBLICATION WAS APPROVED FOR PRINTING. CLAYTON INDUSTRIES, WHOSE POLICY IS ONE OF CONTINUOUS IMPROVEMENT, RESERVES THE RIGHT TO DISCONTINUE MODELS AT ANY TIME, OR CHANGE SPECIFICATIONS OR DESIGN WITHOUT NOTICE AND WITHOUT INCURRING OBLIGATION.