

# **STEAM RENTAL PROGRAM**



**COMPLETE, COMPACT STEAM SYSTEMS**

## **Complete Skid-Mounted Boiler Rooms**

Clayton Industries, specialists in fuel-efficient steam generation equipment for more than 70 years, offers a steam rental program that can meet your emergency and temporary steam requirements. Clayton rental equipment can be dispatched within hours of receiving your call.

We offer prompt shipment, full service and operator training. A wide variety of packaged steam systems are available from 33 to 200 boiler horsepower with multiple units to meet larger steam requirements.

Under most circumstances Clayton can put a rental steam generator in your boiler room and have steam at the header in just a few hours after the equipment arrives on site.

In most cases no modification of your existing boiler room is necessary for installation of Clayton Emergency Steam Generator systems. Clayton rental units fit through standard door openings; are compatible with most boiler room floor plans; and can hook up to existing steam lines, water supplies and electrical services.

Clayton steam generators are very fuel-efficient. Typically, you can save 10-20 percent over other steam production methods. Clayton's unique monotube coil design makes the steam generator lighter and more compact than conventional boilers. This provides rapid start-up - less than five minutes to a full head of steam and real savings compared to 55 to 60 minutes required to heat a large conventional boiler. In addition, the Clayton design assures high fuel-to-steam efficiency at less than full-rated load, whereas conventional boilers lose efficiency as steam demand decreases. Clayton steam generators have a low water content for safe, explosion-free operation.

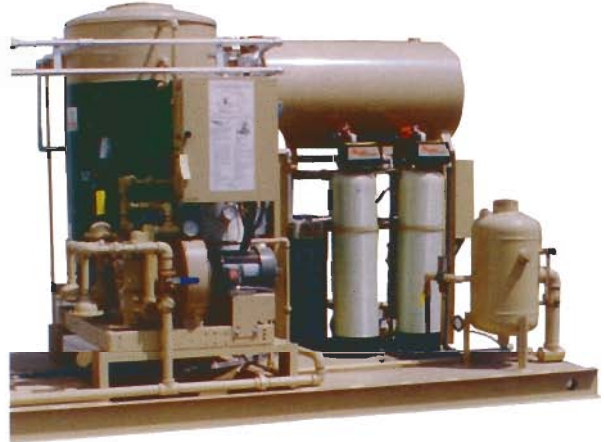
Clayton rental units are equipped to burn either natural gas or clean-burning, readily available, No. 2 diesel oil. With Clayton equipment installed and on-line, your plant can quickly resume or increase production.

Swift delivery of Clayton equipment is simplified by the light shipping weight and compact size of the unit. Strategically located Clayton Factory-Direct service centers can have the system you need on its way by the fastest possible means.

Our complete skid-mounted rental system units are equipped with water softeners, chemical feed systems, condensate return tanks and utility connections.

### **Clayton Steam Systems feature:**

- Quotes within one hour
- Skid-mounted boiler room
- Small footprint  
(convenient for small spaces)
- Skid delivery within hours
- Full start-up service
- Operator training
- 33-200 BHP @ 65-300 psi steam
- Lower fuel consumption
- Rapid start-up  
(make steam within 5 minutes)
- Safety - a Clayton Generator has NEVER exploded
- Fire gas or No. 2 oil
- Easy Installation



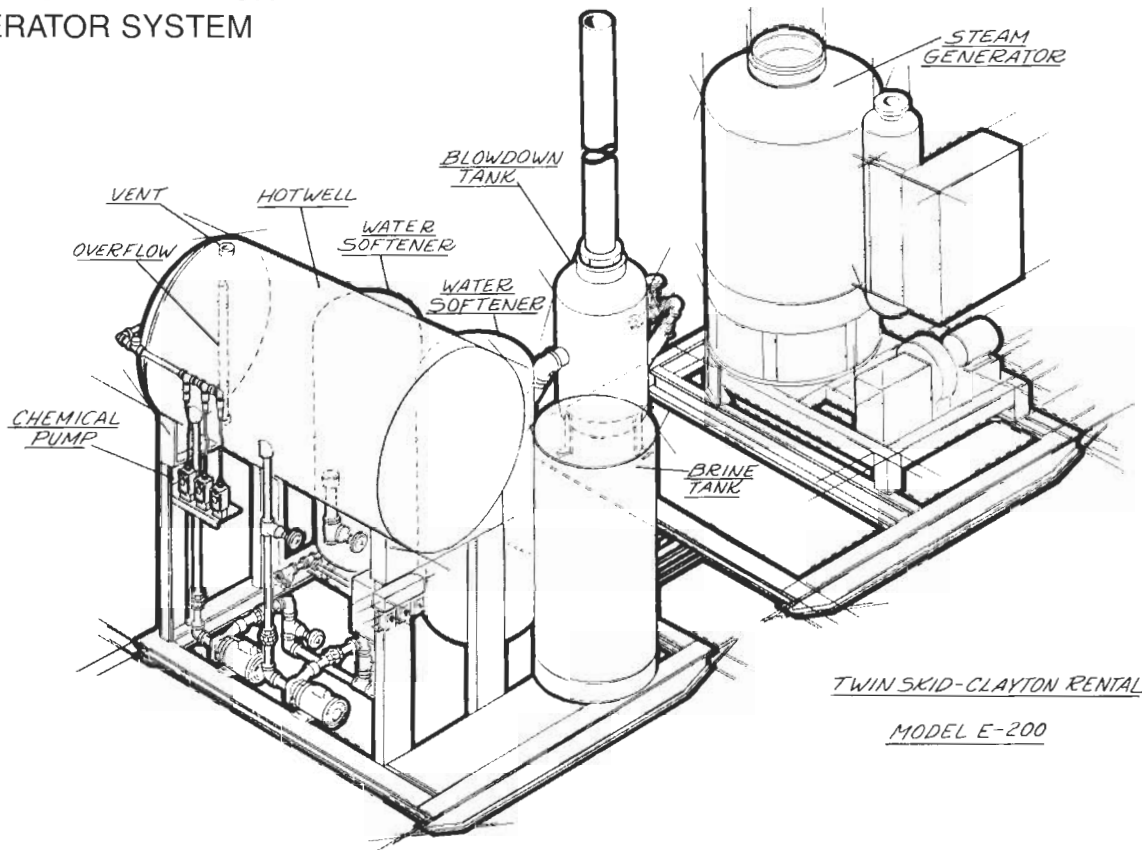
**Generator Skid with 100 BHP  
Steam Generator with a Hotwell  
(Atmospheric Feedwater Receiver)**



**60 BHP Generator Skid  
with a Hotwell  
(Atmospheric Feedwater Receiver)  
System**

# CALL CLAYTON FOR STEAM

## TYPICAL CLAYTON SKID-MOUNTED STEAM GENERATOR SYSTEM



### COMPLETE, COMPACT SYSTEM FOR EASY INSTALLATION.

The Clayton equipment lease/rental program has various options. At the end of the agreement period, the steam generator system may be returned to the Clayton Service Center of origin, the lease rental/agreement may be renewed upon

negotiation, or a Clayton Steam Generator may be purchased. Clayton manufactures and sells a full range of direct-fired and exhaust gas steam generators from 20 to 600 boiler horsepower and multiple units for higher horsepower needs.

**Clayton**  
**INDUSTRIES**

**1-800-423-4585**

4213 Temple City Blvd., P.O. Box 5530, El Monte CA 91734 • Fax (626)442-1701

www.claytonindustries.com • E-mail address: clayemail@aol.com

FACTORY DIRECT SALES AND SERVICE

U.S. Offices

ATLANTA • BRAMPTON, ONTARIO • CHICAGO • CINCINNATI • CLAYTON, CA • CLEVELAND • DALLAS • DETROIT • EAST TEXAS, PA  
EL MONTE, CA • KANSAS CITY • LILBURN, GA • NEW JERSEY • OLD GREENWICH, CT

AFFILIATES, LICENSEES, SALES and SERVICE DISTRIBUTORS WORLD-WIDE

THE DESCRIPTION AND SPECIFICATIONS SHOWN WERE IN EFFECT AT THE TIME THIS PUBLICATION WAS APPROVED FOR PRINTING. CLAYTON INDUSTRIES, WHOSE POLICY IS ONE OF CONTINUOUS IMPROVEMENT, RESERVES THE RIGHT TO DISCONTINUE MODELS AT ANY TIME, OR CHANGE SPECIFICATIONS OR DESIGN WITHOUT NOTICE AND WITHOUT INCURRING OBLIGATION.