

## TOP TEN REASONS TO BUY A CLAYTON STEAM GENERATOR

### 2. COMPACT SIZE

Space is always an important consideration for your boiler installation, and your average industrial boiler can be a large, heavy, and cumbersome piece of equipment. Whether you find yourself looking for a new way to save space in an already crowded boiler room, or are weighing the costs of a brand new construction, the physical footprint of your boiler plays a large role in your ultimate decision.

Contrary to the common design, Clayton Steam Generators feature a sleek, compact form, which is typically less than a third of the size of its traditional firetube counterpart. With its smaller footprint, a Clayton Steam Generator can fit into the tight spaces and configurations of an existing plant that would be impossible with a conventional firetube boiler, typically taking up less than one third of the space.

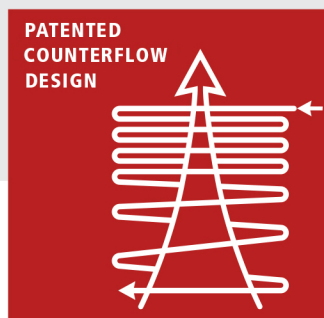
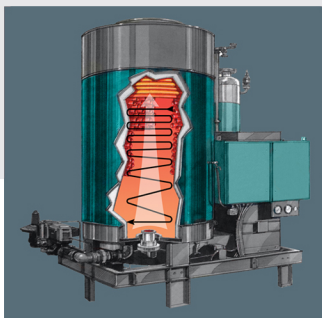
In the case of an entirely new installation, this completely eliminates the need for a constructing a large boiler room, further reducing the costs and calculations that would have been associated with housing such a massive piece of equipment. The Clayton design also means that multiple steam generators are able to fit inside of the space that was previously occupied by a single firetube boiler, making them capable of producing an even greater steam output within the same physical footprint.

Clayton Steam Generators come in three different compact models to fit the space requirements of any installation. The first is our standard E Series model, ranging from 150 to 1200 boiler horsepower, capable of delivering exceptionally high quality steam without sacrificing floor space.

For situations that require even less of a physical footprint, the Clayton Sigma Fire is available from 25 to 200 Horsepower, which further reduces the slim profile of the E Series design.

Finally, the Clayton Steam Master, the most recent addition to our line of generators, is available in 15, 30, and 40 boiler horsepower designs, making it an ideal space saving solution for installations in smaller plants that require lower steam demands.

Good things come in small packages, and this is especially true of the Clayton Steam Generator's compact design.



#### Clayton Industries, Inc.

17477 Hurley Street ■ City of Industry, CA 91744

Tel: (800) 423-4585 ■ Fax: (626) 435-0180

Email: [sales@claytonindustries.com](mailto:sales@claytonindustries.com) ■ [www.claytonindustries.com](http://www.claytonindustries.com)



**Clayton**  
INNOVATIVE STEAM SOLUTIONS